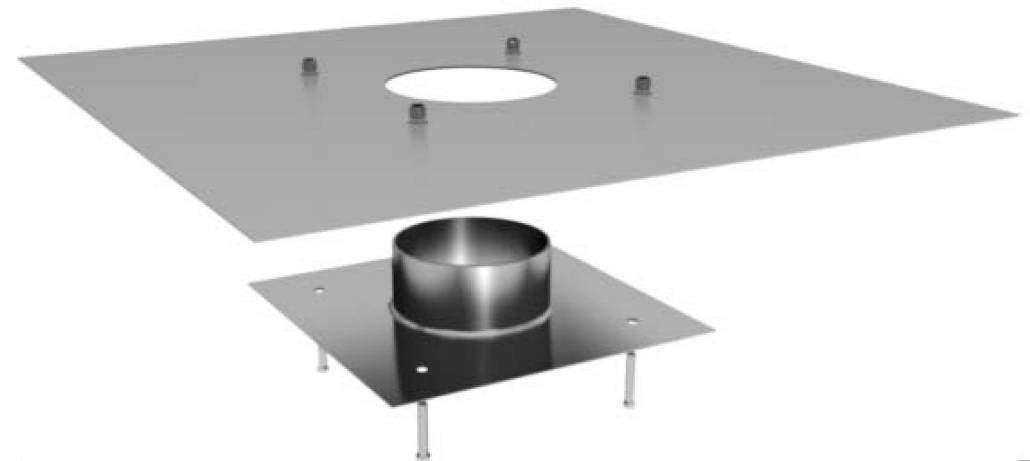
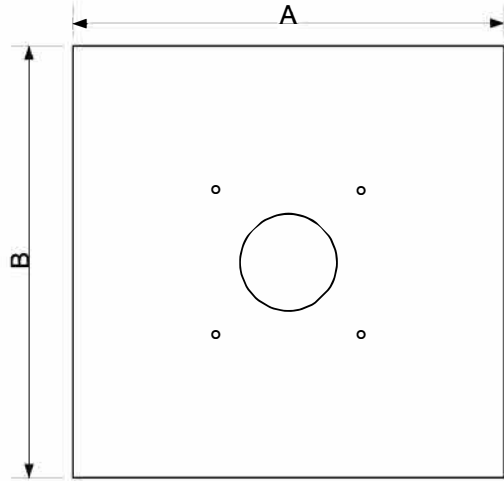
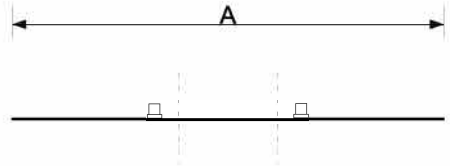
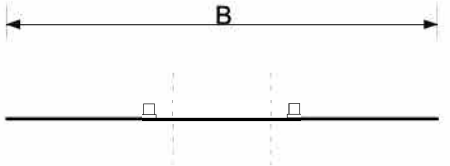
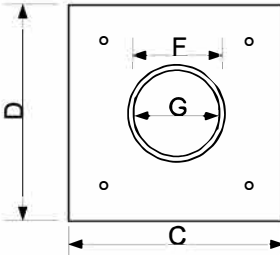
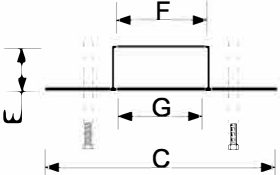
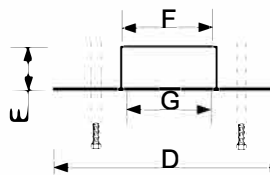


**DEBRIS PLATE WITH SEPARATE SPIGOT COLLAR**  
(to suit 125mm flexible liner)



	Plan Elevation	Front Elevation	Side Elevation
<b>Base Plate</b>			
<b>Spigot Collar</b>			
A - Base Length	300mm or 400mm or 500mm or 600mm	E - Spigot Height	60mm
B - Base Width	300mm or 400mm or 500mm or 600mm	F - Spigot Diameter Top	133mm
C - Collar Plate Length	200mm	G - Spigot Diameter Bottom	125mm
D - Collar Plate Width	200mm		
		<p>Drawing Copyright: Fluetechn Ltd Unit 19 Drakes Industrial Estate Shay Lane, Halifax West Yorkshire HX3 6RL Tel:01422 351322 www.fluetechn.co.uk</p>	
		<p>Description: Debris plate with separate bolt on spigot collar. Main plate has fixed threaded captive fixings to facilitate attaching the spigot collar from underneath. Spigot is tapered to allow for insertion of flue liner which is then held in place using self tapping screws from the sides. Please Note: Only 1 debris plate is supplied to your requested size <u>Suitable for gas or solid fuel installations</u></p>	
		<p>Materials: 22SWG Galvanised Plate</p>	
		<p>Drawing: DP_SpigCol_133 Revision: 1 Drawing Date: 01/12/2010 Drawn: PS</p>	