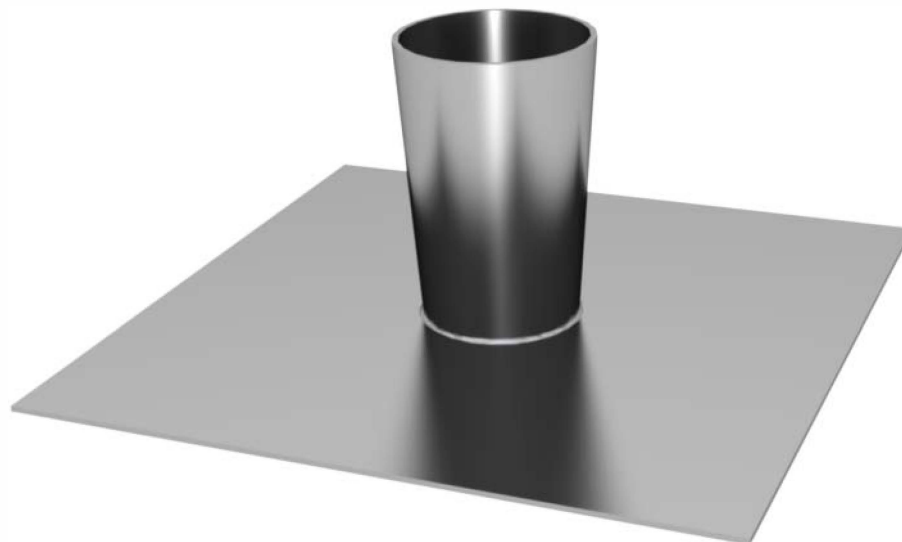
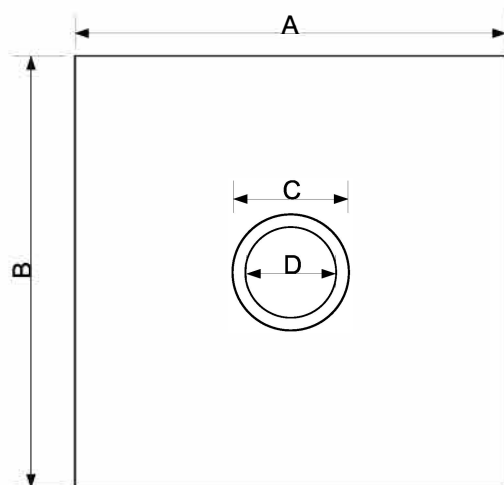


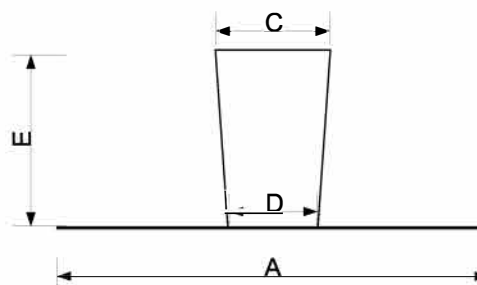
DEBRIS PLATE WITH TAPERED SPIGOT
to suit 125mm (5") or 180mm (7") single skin
flexible flue liner



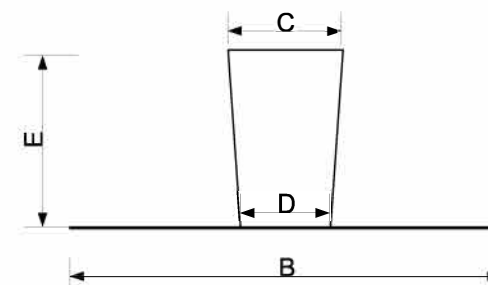
Plan Elevation



Front Elevation



Side Elevation



A - Base Length	300mm or 400mm or 500mm or 600mm	E - Spigot Height	250mm	Drawing Copyright: Flueotech Ltd Unit 19 Drakes Industrial Estate Shay Lane, Halifax West Yorkshire HX3 6RL Tel: 01422 351322 www.flueotech.co.uk	Description: Debris plate with tapered spigot. Spigot is tapered to allow for insertion of flue liner which is then held in place using self tapping screws from the sides. Please note: only 1 plate is supplied to your requested sizes <u>Suitable for gas or solid fuel installations</u> Materials: 22SWG Galvanised Plate	Drawing:	DP_TAP_SPIG
B - Base Width	300mm or 400mm or 500mm or 600mm					Revision:	1
C - Spigot Diameter - Top	To Suit 5" Liner - 160mm, To Suit 7" Liner - 210mm					Drawing Date:	01/12/2010
D - Spigot Diameter - Bottom	To Suit 5" Liner - 125mm, To Suit 7" Liner - 180mm					Drawn:	PS